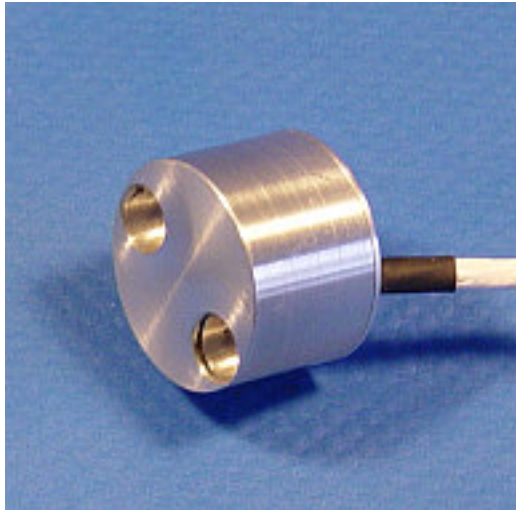


## AI 100.201.010 Accelerometer for 2 Axes



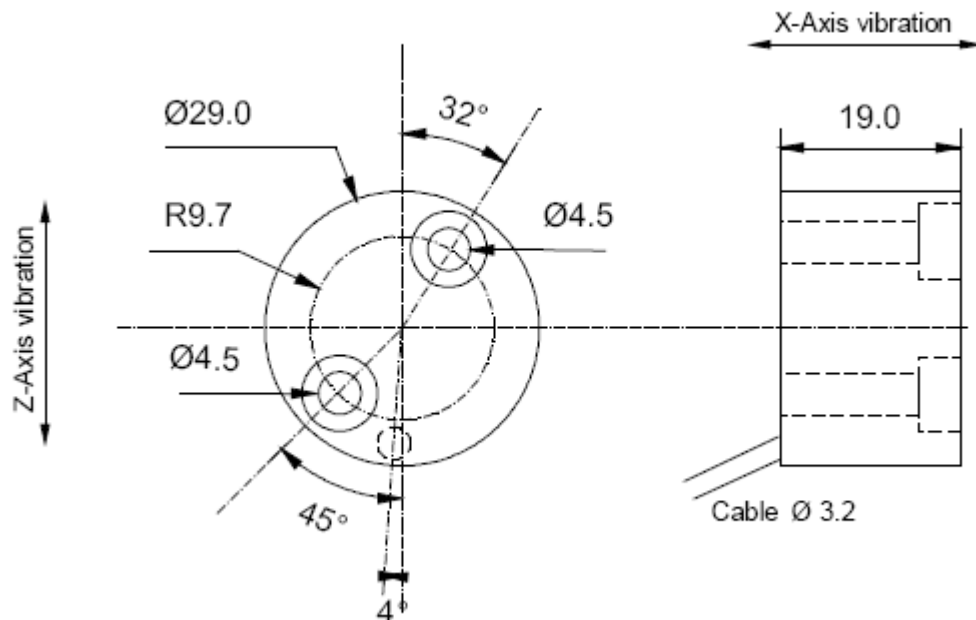
- Accelerometer with 2 sensitive axes for vibration and roller bearing condition measurements
- Heavy duty design for use in harsh environments, such as in contact with cooling liquid
- Integral cable for protection against moisture
- PUR cable isolation for high mechanical robustness
- Aluminium housing

### Specifications:

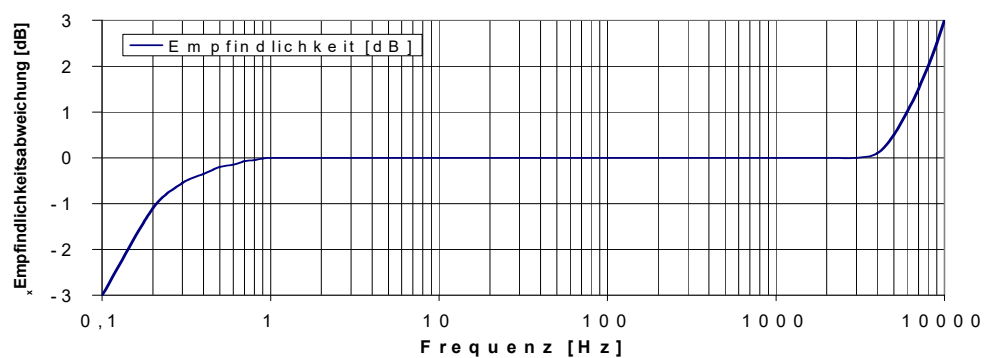
Sensor type	2 piezoelectric accelerometers (PZT/Shear)
Sensitivity	100 mV/g +/-10%
Resolution	0,001 g
Acceleration range	max.50 g
Shock Limit	max 5000 g
Frequency range	0,5 - 10.000 Hz +/-3 dB (5.000 - 50.000 Hz for Bearing Condition)
Resonant Frequency, mounted	> 25 kHz
Power Requirements	Constant current 2 -10 mA; +18 to 28 V DC
Temperature Range	-40...+120°C
Housing Material	Aluminum
Dimensions	Ø approx. 29 mm approx. 19 mm high
Mounting	Mounting holes for M4 screws
Weight	approx. 35 gramms (excluding cable)
Shipping weight	approx. 100 gramms (with 1 m cable)
Cable	Shielded 4 wire, PUR jacketed, outer diameter: approx. 3.2 mm Connection: white – signal X-axis brown – ground X-axis green – signal Z-axis yellow – ground Z-axis
Standard cable length.	Approx. 1 meter: AI100.201.010 other lengths on request

# AI 100.201 Accelerometer

## Dimensions:



## Frequency Response (typical):



### IBIS GmbH

Werner-von-Siemens-Str. 21  
64319 Pfungstadt

Tel: (0)6157-949-370

Fax: (0)6157-949-100

[www.ibis-gmbh.de](http://www.ibis-gmbh.de)

[info@ibis-gmbh.de](mailto:info@ibis-gmbh.de)